

KIT PART NUMBER 6231520

INSTRUCTIONS FOR INSTALLING A CANISTER SUPPORT BRACE KIT

CHECK THE PARTS RECEIVED IN THE KIT WITH THE PARTS LIST IN THESE INSTRUCTIONS. IF ANY PARTS ARE MISSING, CONTACT NATIONAL VENDORS' PARTS DEPARTMENT IMMEDIATELY.

Read these instructions carefully before installing the kit.
Retain these instructions for part numbers and for future reference.

PART NUMBER	DESCRIPTION	QTY
1471097	Screw - #8-32 x 5/16 Hex Hd, T/F	4
6231516	Brace - Canister Support - Upper	2
6231517	Instructions - Canister Brace Installation	1

Also available as a separate kit:

Canister Support Brace Drill Template Kit - Part Number 6231521. This kit contains two drill templates to aid in hole location.

INSTALLATION INSTRUCTIONS FOR CANISTER SUPPORT BRACE KIT

Refer to Figure 1 during installation:

1. Remove canisters No. 2 (decaf) through No. 8 (soup), the No. 3 (tea) mixing bowl and the decaf coffee grinder, if so equipped, from the machine. Cover all lower components to protect them from falling metal chips.
2. Position the canister channel drill template to the top flange of the canister channel with the locating tab inserted in the center slot of the No. 3 (tea) canister position.
3. While holding the template down firmly and against the back surface of the channel, drill a hole using a No. 28 or 9/64Dia. drill bit (0.140Dia.) through the flange.
4. Reposition the drill template to the center slot of the No. 7 (sugar substitute) canister and repeat Step 3.
5. Remove the drill template and set it aside.
6. Position the motor channel drill template on the top surface of the motor channel with the small locating tab against the upper right edge of the No. 3 (tea) motor plate.
7. While holding the template down firmly and against the front surface of the motor channel, drill a hole using a No. 28 or 9/64Dia. drill bit (0.140Dia.) through the face of the channel.

8. Remove the template and repeat Step 7 after positioning the template with the locating tab between the No. 6 (lightener) and No. 7 (sugar substitute) motor mounting plates.
9. To install each of the braces, position the end with the 67° formed end to the motor channel at the holes just drilled and insert (2) #8-32 thread forming screws (PN 1451097) but do not tighten. Position the opposite ends (23° form) to the canister channel over the holes drilled in Steps 4 and 5, and insert (2) #8-32 thread forming screws (PN 1451097). Tighten all screws.
10. Replace the mixing bowl, canisters and grinder after removing all drilling debris.

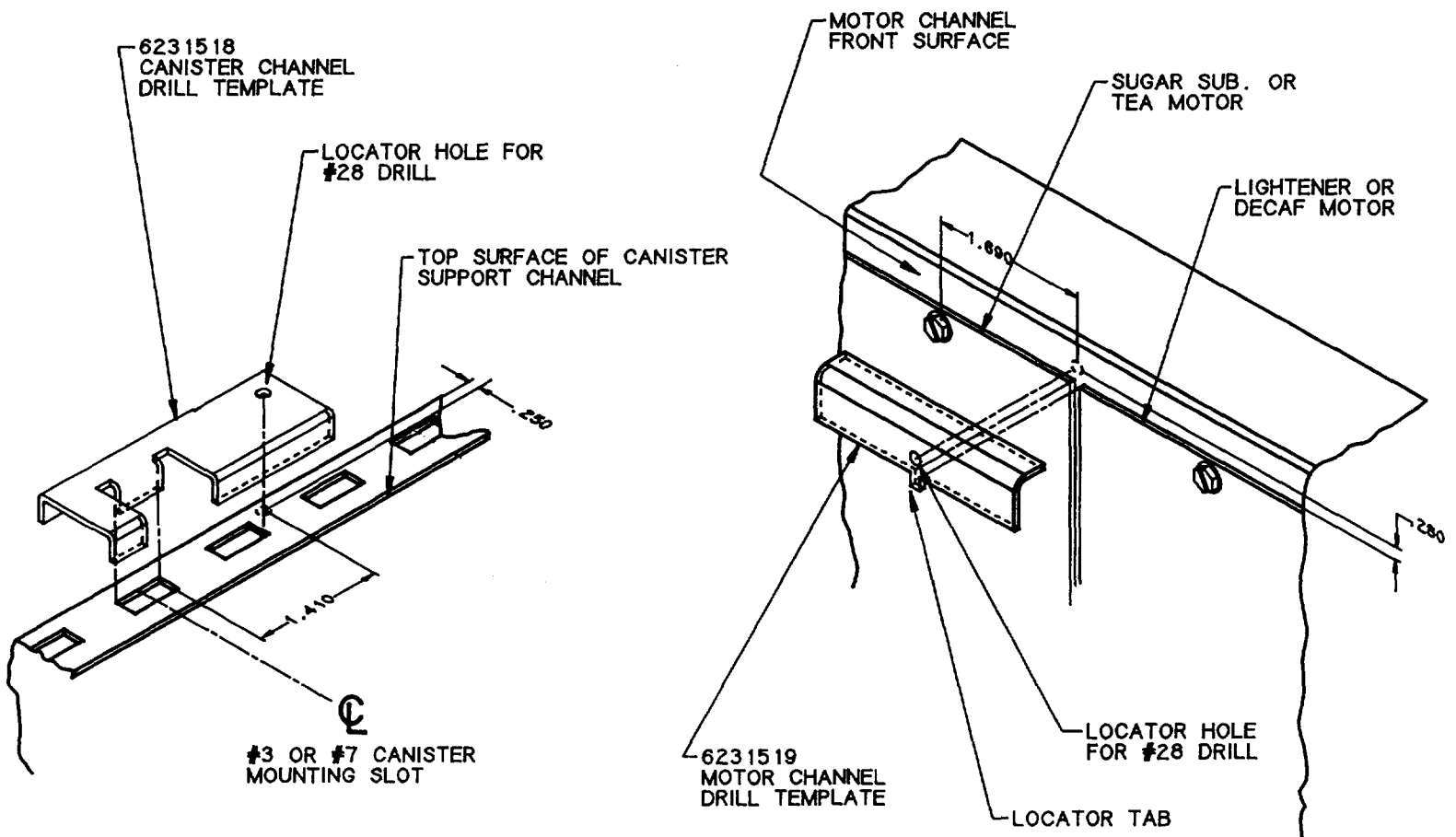
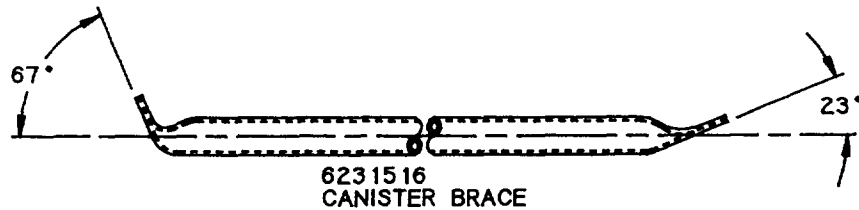


Figure 1.